

---

|       |     |
|-------|-----|
| ..... | .56 |
| ..... | .57 |
| ..... | .58 |
| ..... | .59 |
| ..... | .59 |
| ..... | .61 |
| ..... | .62 |
| ..... | .63 |
| ..... | .63 |
| ..... | .63 |
| ..... | .64 |
| ..... | .64 |
| ..... | .64 |
| ..... | .65 |
| ..... | .66 |
| ..... | .67 |
| ..... | .69 |
| ..... | .71 |

I<!F®

GifY

fF: L

<( )%-)+, A;n

GifY

GifY

fkkk"gifY"waL

- 
- 

\*%

\*)

- 
- 
- 
- 

& X6

SX6

Audio

& X6

#

L@F

-' \$ X6

F>! ()

GifY KJfY Ygg Kcf\_VbW D7

D7

GifY

GifY

\*&



RE

SYN

or %#(

ATOR CLIP LED

• 1

8

9

10

11

F

12 M ./Line

13

14 /GND

GND

15

16

17

18

F>! ()



ENTER

Radio

- \_\_\_ Control
- \_\_\_ Control

G Ch

Radio

- \_\_\_ Control

2 Squel ch

: fYeI YbWn

Radio

- \_\_\_ Control
- \_\_\_ Control

741.000 MHzL

Util

- \_\_\_ Control

2 Lock

ON OFF

Sync

- \_\_\_ Control

Util

- \_\_\_ Control
- \_\_\_ Control

2 Title

Util

- \_\_\_ Control
- \_\_\_ Control

Util

- \_\_\_ Control

2 Contrast

Audio

- \_\_\_ Control

Radio  
Tonekey

2 Squel ch

2

On

- ENTER
- FIF(&

Util Network  
 % Control Mode  
 & Control

- DHCP <
- Manual =D

=D

Util Network

% Control  
 • IP =D  
 • Sub  
 & Control

Manual

Util Network  
 % Control DevID

& Control

\*\*\*

Radio Custom  
 % Control U1 U2 U3  
 & Control Channel  
 01 02 03  
 " Control Freq

(" NEXT



""

- 
- 
- 
- 

78

```

% Radi o      2 Scan      2 Chan Scan      Navigate
& Control
" Chan Scan
(" ENTER
)" *)

```

f \* & L

```

""
% Radi o      2 Scan      2 Group Scan      Navigate
Scan I n Progress0 Q
& Control
" ENTER
)
<
<

```

—

""

ENTER

""

< ( > @







n  
+15  
ASCI

nva

%

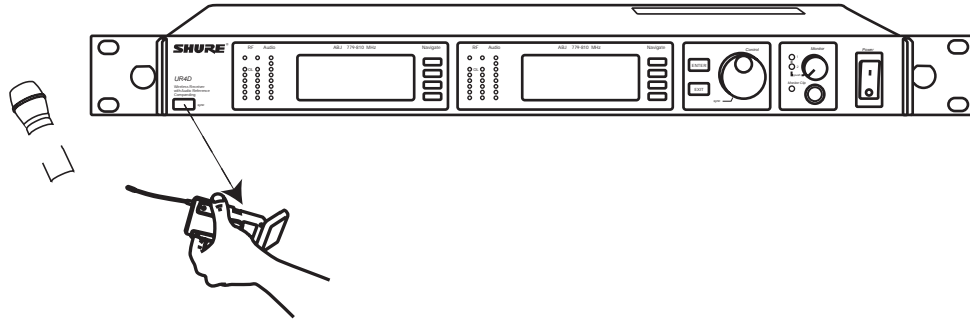
%  
&

""

=F

Sync

2 Sync



""

%  
&  
'"  
(

Sync

2 Setup

Control

Control

ENTER

No Change

""

Sync

2 Setup

- Sens
- Gain
- Pwr
- Lock
- fPwr OnlyL
- fPwr OnlyL
- fFreq and PwrO
- fUnlockedO
- CG
  - ON
  - OFF

Q

Q



|                    |                               | (mW)               |                     |
|--------------------|-------------------------------|--------------------|---------------------|
| <b>H4E,<br/>H4</b> | 518-578                       | 10 / 50<br>10 / 50 | 10 / 50<br>10 / 100 |
| <b>J5E,<br/>J5</b> | 578-638<br>(578-608, 614-638) | 10 / 50<br>10 / 50 | 10 / 50<br>10 / 100 |
| <b>L3E,<br/>L3</b> | 638-698                       | 10 / 50<br>10 / 50 | 10 / 50<br>10 / 100 |
| <b>Q5</b>          | 740-814                       | 10 / 50            | 10 / 50             |
| <b>R9</b>          | 790-865                       | 10 / 50            | 10 / 50             |
| <b>Q6</b>          | 740-752                       | 10                 | 10                  |
| <b>A24</b>         | 779-788 / 797-806             | 10                 | 10                  |
| <b>JBX</b>         | 806-810                       | 10                 | 10                  |
| <b>Q10</b>         | 740-798                       | 10 / 50            | 10 / 50             |



)%!, \*)

IF% IF& ' % &' ( ) SS'  
500 (1600 )

(S! % žSSS' <rz' fZ% Xž' !' XGL

IF% -&S' Ž ) X6  
IF& -%S' Ž&S' X6

:A ( )

25' %S) X6

2%S' X6

| UR4S                    | UR4D                    |
|-------------------------|-------------------------|
| -110 dBm<br>12 dB SINAD | -107 dBm<br>12 dB SINAD |
| -105 dBm<br>30 dB SINAD | -102 dBm<br>30 dB SINAD |

2- S' X6

25' %SS'

' ( )  
' & ' L@F' ' S&' ' %#( ' L@F'

' w' ( ) %  
<S'' 1

IF% IF& ' %) J' 55'  
IF( %SS' &S' ) S#S'

IF% IF& ' % S'  
' &S'

IF(8 ' S" '  
IF(G ' S" '

IF% IF& ' -" '  
\*'

-%° : Ž +°7 S° : Ž% )° :

' )°7 ft)° : L

IF% ' -' ' 1 \*S' ' 1 %'  
' ' ( ' &' ' 1 S' \*\*

IF&#GA, ' &\*% ' 1 )% ' %S' &+ 1 &  
IF&#GA \* ' &\*% ' 1 )% ' %S' &+ 1 &

IF&#GA +5 ' & ( ' 1 )% ' %S' 1 &  
IF&#?GA #G?Z' IF&#?GA #G@ ' & S' ' 1 (-' ' -

+ #, ' 1 % % #/%'  
IF&#G9H5', ' & , ' 1 )% ' %S' % 1 &  
IF&#G9H5', +5 IF&#G9H5', +7 ' & ( ' 1 ) S'

%S' 1 &  
IF(G#IF(8 ' (( ' 1 (, ' ' 1 \*\*  
' % +& 1 % " SSS' 1 % " -

IF% ' -+ ' " (

IF&#GA, ' ' ) \* ' %&' \*

IF&#G9H5', ' ' % ' %S' %

IF&#GA \* ' % ' %S' &

IF&#GA +5 ' & , ' %S' )

IF&#G9H5', +5 I&#G9H5', +7 ' & ' %S' )

IF&#?GA #G?Z' IF&#?GA #G@ ' ( %S' % ( " )

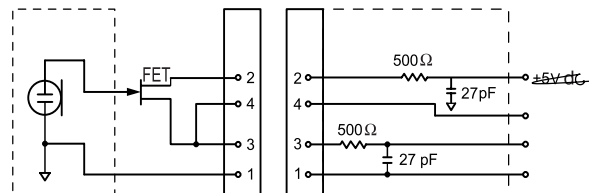
IF(G ' ( " , ' %S' \*'

IF(8 ' ) ' %S' S'

IF% '

IF& '

IF(G IF(8 '



**IF%**

|                      |  |      |
|----------------------|--|------|
|                      | 4                                      | TA4M |
|                      | >1                                     | Ω    |
| <b>1 KhZ, 1% THD</b> | +10 dBu, ( 0 dB)<br>+20 dBu, ( -10 dB) |      |
| <b>TA4M</b>          | 1<br>2 +5<br>3<br>4<br><br>4           |      |

**IF%**

|  |      |
|--|------|
|  | SMA  |
|  | 50 Ω |
|  | =    |
|  | =    |

**IF&**

|                      |      |     |
|----------------------|------|-----|
|                      | >1   | Ω   |
| <b>1 KhZ, 1% THD</b> | +4.8 | dBu |

**IF&**

|  |     |
|--|-----|
|  | SMA |
|  | 50Ω |
|  | =   |
|  | =   |

|  | BNC         | IEC                                 |
|--|-------------|-------------------------------------|
|  | 50 Ω        | -                                   |
|  | -95 -30 dBm | 100-240<br>50/60                    |
|  | -20 dBm     | 240 + 10%<br>50/60                  |
|  | =           | IEC>Tj1 0 Td4568>Tj1 0 Td073A>T7-21 |
|  | =           |                                     |

1

#

1 : ICGl = : ' Ibj YfgU ' Gf] U ' 6i g' =ad' YaYbhYfg' : cfi az' =bW



|             |         |
|-------------|---------|
| UR2         | WA371   |
| UR1         | 26A13   |
| UR2         | 26A14   |
| 2           | 95A9023 |
|             | WA340   |
| UR1 518-578 | UA710   |
| UR1 578-698 | UA720   |
| UR1 740-865 | UA730   |
| UR4         | UA820   |
|             | 95A9053 |

|                   |         |
|-------------------|---------|
| SM58              | RPW112  |
| SM86              | RPW114  |
| BETA 58           | RPW118  |
| BETA 87A          | RPW120  |
| BETA 87C          | RPW122  |
| SM87A             | RPW116  |
| KSM9/SL           | RPW180  |
| KSM9/BK           | RPW184  |
| SM58              | RK143G  |
| SM86              | RPM266  |
| BETA 58           | RK265G  |
| SM87              | RK214G  |
| BETA 87A          | RK312   |
| BETA 87C          | RK312   |
| BETA 58           | RK323G  |
| BETA 87A/BETA 87C | RK324G  |
|                   | 44A8031 |
| UR1               | WA580B  |
| UR1               | WA580B  |
| ®                 | A85WS   |

- I5, ()
- I5, ()

|       |                  |
|-------|------------------|
| /     | UA221            |
| UHF   | UA845            |
|       | UA845US          |
|       | UA845E           |
|       | UA845UK          |
| 1/2   | UA860WB          |
|       | UA870WB          |
|       | UA830WB          |
|       | PA805WB          |
| 1/2 2 |                  |
|       | H4E, H4 UA820H4  |
|       | J5E J5 UA820J    |
|       | L3E L3 UA820L3   |
|       | Q5 Q6 Q10 UA820Q |
|       | R9 ABJ UA820A    |
| 25    | (RG-8/X) UA825   |
| 50    | (RG-8/X) UA850   |
| 100   | UA8100           |

)% ,\*) I< %\$

55

A5F758

#

GifYI< !F

IF% IF& : 77 + ( : 77 88(IF% 88(IF& FCG! %& FCG! %&& =7 =7  
 \*%5!IF% =7 \*%5!IF& F/HÐ F/HÐ CE 0682 ①  
 IF(G IF(8 : 77 % FCG! %& =7 \*%5!IF& F/HÐ  
 --#) #97 9B' S% (, - % 9B' SS' (&& % & 79 CE  
 9A7 7! H W N108  
 W@g I@) SS 7G5#75B 9\*SS\*) I@;G 9B\*SS\*)

GifY =bWfdcfUhYX

GifY

GifY

: 77 % 6

- 
- 
- 
- 

#

=79G! SS'

f!%

f!%

9A7

9A7

**SYSTEM COMPATIBILITY GUIDE FOR FREQUENCY BANDS H4, H4E, J5, J5E, L3, L3E, Q5, Q9, R9, A24, JBX, Q6 AND Q10  
 SYSTÈMES COMPATIBLES EN FRÉQUENCE DANS LA BANDES H4, H4E, J5, J5E, L3, L3E, Q5, Q9, R9, A24, JBX, Q6 ET Q10  
 FREQUENZKOMPATIBLE SYSTEME IM FREQUENZBEREICH H4, H4E, J5, J5E, L3, L3E, Q5, Q9, R9, A24, JBX, Q6 UND Q10  
 SISTEMAS CON FRECUENCIAS COMPATIBLES EN LAS BANDAS H4, H4E, J5, J5E, L3, L3E, Q5, Q9, R9, A24, JBX, Q6 Y Q10  
 SISTEMI COMPATIBILI IN FREQUENZA NELLA BANDAS H4, H4E, J5, J5E, L3, L3E, Q5, Q9, R9, A24, JBX, Q6 E Q10  
 SISTEMAS COM FREQUÊNCIAS COMPATÍVEIS DA NA FAIXA H4, H4E, J5, J5E, L3, L3E, Q5, Q9, R9, A24, JBX, Q6 E Q10**

**H4 FREQUENCY BAND (518.000 - 578.000 MHz)**

|         | TV<br>22 & 27 | TV<br>23 & 28 | TV<br>24 & 29 | TV<br>25 & 30 | TV<br>26 & 31 | All Bands | All Bands | Full<br>Spectrum | Full<br>Spectrum | Full<br>Spectrum |
|---------|---------------|---------------|---------------|---------------|---------------|-----------|-----------|------------------|------------------|------------------|
| Channel | Group 1       | Group 2       | Group 3       | Group 4       | Group 5       | Group 6   | Group 7   | Group 8          | Group 9          | Group 10         |
| 1       | 518.350       | 524.350       | 530.350       | 536.350       | 542.350       | 519.000   | 519.250   | 518.100          | 518.900          | 518.050          |
| 2       | 518.850       | 524.850       | 530.850       | 536.850       | 542.850       | 519.425   | 521.625   | 518.825          | 519.625          | 518.550          |
| 3       | 519.575       | 525.575       | 531.575       | 537.575       | 543.575       | 522.100   | 525.800   | 519.350          | 520.150          | 519.500          |
| 4       | 520.500       | 526.500       | 532.500       | 538.500       | 544.500       | 524.525   | 526.375   | 520.375          | 521.175          | 519.900          |
| 5       | 521.625       | 527.625       | 533.625       | 539.625       | 545.625       | 525.525   | 528.075   | 521.725          | 522.525          | 520.750          |
| 6       | 522.450       | 528.450       | 534.450       | 540.450       | 546.450       | 526.075   | 533.950   | 522.350          | 523.150          | 523.750          |
| 7       | 523.075       | 529.075       | 535.075       | 541.075       | 547.075       | 527.325   | 535.500   | 525.150          | 525.950          | 530.500          |
| 8       | 523.475       | 529.475       | 535.475       | 541.475       | 547.475       | 528.100   | 538.350   | 530.250          | 531.050          | 532.600          |
| 9       | 548.125       | 554.125       | 560.125       | 566.125       | 572.125       | 537.475   | 542.400   | 530.675          | 531.475          | 534.150          |
| 10      | 548.650       | 554.650       | 560.650       | 566.650       | 572.650       | 540.450   | 543.475   | 532.750          | 533.550          | 538.925          |
| 11      | 549.675       | 555.675       | 561.675       | 567.675       | 573.675       | 541.600   | 547.350   | 534.625          | 535.425          | 541.750          |
| 12      | 551.025       | 557.025       | 563.025       | 569.025       | 575.025       | 544.925   | 553.625   | 543.475          | 544.275          | 545.500          |
| 13      | 551.750       | 557.750       | 563.750       | 569.750       | 575.750       | 551.625   | 561.075   | 544.700          | 545.500          | 546.425          |
| 14      | 552.150       | 558.150       | 564.150       | 570.150       | 576.150       | 553.300   | 565.700   | 547.325          | 548.125          | 547.875          |
| 15      | 552.975       | 558.975       | 564.975       | 570.975       | 576.975       | 555.300   | 569.050   | 548.775          | 549.575          | 550.500          |
| 16      | 553.600       | 559.600       | 565.600       | 571.600       | 577.600       | 557.075   | 570.775   | 549.700          | 550.500          | 551.725          |
| 17      |               |               |               |               |               | 561.100   | 571.550   | 553.450          | 554.250          | 560.575          |
| 18      |               |               |               |               |               | 566.000   | 572.800   | 556.275          | 557.075          | 562.450          |
| 19      |               |               |               |               |               | 567.550   | 573.425   | 561.050          | 561.850          | 564.525          |
| 20      |               |               |               |               |               | 574.475   | 573.825   | 562.600          | 563.400          | 564.950          |
| 21      |               |               |               |               |               | 518.350   | 519.875   | 564.700          | 565.500          | 570.050          |
| 22      |               |               |               |               |               | 544.325   | 520.275   | 571.450          | 572.250          | 572.850          |
| 23      |               |               |               |               |               | 548.550   | 522.425   | 574.450          | 575.250          | 573.475          |
| 24      |               |               |               |               |               | 554.050   | 546.925   | 575.300          | 576.100          | 574.825          |
| 25      |               |               |               |               |               | 559.900   | 555.750   | 575.700          | 576.500          | 575.850          |
| 26      |               |               |               |               |               | 520.125   | 521.050   | 576.650          | 577.450          | 576.375          |
| 27      |               |               |               |               |               | 535.025   | 536.475   | 577.150          | 577.950          | 577.100          |
| 28      |               |               |               |               |               | 550.450   | 537.250   | 523.850          | 524.650          | 522.450          |
| 29      |               |               |               |               |               | 573.625   | 539.250   | 548.300          | 549.100          | 546.900          |
| 30      |               |               |               |               |               | 575.850   | 544.000   | 572.750          | 573.550          | 571.350          |
| 31      |               |               |               |               |               | 522.650   | 548.950   | 529.350          | 530.150          | 524.425          |
| 32      |               |               |               |               |               | 531.375   | 552.050   | 533.950          | 534.750          | 528.625          |
| 33      |               |               |               |               |               | 538.475   | 561.975   | 537.925          | 538.725          | 529.675          |
| 34      |               |               |               |               |               | 539.100   | 566.200   | 561.950          | 562.750          | 533.250          |
| 35      |               |               |               |               |               | 554.450   | 567.125   | 565.525          | 566.325          | 557.275          |
| 36      |               |               |               |               |               | 564.775   | 575.050   | 566.575          | 567.375          | 561.250          |
| 37      |               |               |               |               |               |           |           | 570.775          | 571.575          | 565.850          |
| 38      |               |               |               |               |               |           |           | 535.750          | 536.550          | 525.775          |
| 39      |               |               |               |               |               |           |           | 551.700          | 552.500          | 543.500          |
| 40      |               |               |               |               |               |           |           | 569.425          | 570.225          | 559.450          |

**J5 FREQUENCY BAND (578.000 - 607.975 - 614.025 - 638.000 MHz)**

|         | TV<br>32 & 37 | TV<br>33 & 38 | TV<br>34 & 39 | TV<br>35 & 40 | TV<br>36 & 41 | All Bands | All Bands | Full<br>Spectrum | Full<br>Spectrum | Full<br>Spectrum |
|---------|---------------|---------------|---------------|---------------|---------------|-----------|-----------|------------------|------------------|------------------|
| Channel | Group 1       | Group 2       | Group 3       | Group 4       | Group 5       | Group 6   | Group 7   | Group 8          | Group 9          | Group 10         |
| 1       | 578.350       | 584.350       | 590.350       | 596.350       | 602.350       | 578.625   | 581.650   | 578.375          | 578.125          | 578.100          |
| 2       | 578.850       | 584.850       | 590.850       | 596.850       | 602.850       | 579.125   | 586.625   | 579.400          | 578.550          | 579.125          |
| 3       | 579.575       | 585.575       | 591.575       | 597.575       | 603.575       | 584.825   | 588.025   | 581.750          | 579.200          | 581.475          |
| 4       | 580.500       | 586.500       | 592.500       | 598.500       | 604.500       | 586.475   | 592.275   | 582.625          | 580.600          | 582.350          |
| 5       | 581.625       | 587.625       | 593.625       | 599.625       | 605.625       | 587.750   | 595.225   | 584.675          | 581.150          | 584.400          |
| 6       | 582.450       | 588.450       | 594.450       | 600.450       | 606.450       | 588.500   | 597.675   | 587.350          | 584.500          | 587.075          |
| 7       | 583.075       | 589.075       | 595.075       | 601.075       | 607.075       | 592.950   | 601.750   | 588.825          | 585.375          | 588.550          |
| 8       | 583.475       | 589.475       | 595.475       | 601.475       | 607.475       | 598.975   | 602.175   | 589.225          | 588.950          | 588.950          |
| 9       |               | 614.125       | 620.125       | 626.125       | 632.125       | 599.875   | 604.300   | 594.200          | 591.175          | 593.925          |
| 10      |               | 614.650       | 620.650       | 626.650       | 632.650       | 615.900   | 607.675   | 594.725          | 593.925          | 594.450          |
| 11      |               | 615.675       | 621.675       | 627.675       | 633.675       | 617.600   | 614.425   | 596.975          | 595.225          | 596.700          |
| 12      |               | 617.025       | 623.025       | 629.025       | 635.025       | 618.400   | 620.650   | 603.475          | 604.150          | 603.200          |
| 13      |               | 617.750       | 623.750       | 629.750       | 635.750       | 621.350   | 622.025   | 606.050          | 604.875          | 605.775          |
| 14      |               | 618.150       | 624.150       | 630.150       | 636.150       | 621.750   | 623.800   | 607.725          | 606.275          | 607.450          |
| 15      |               | 618.975       | 624.975       | 630.975       | 636.975       | 627.925   | 625.000   | 616.200          | 618.025          | 615.925          |
| 16      |               | 619.600       | 625.600       | 631.600       | 637.600       | 629.975   | 630.175   | 619.250          | 620.825          | 618.975          |
| 17      |               |               |               |               |               | 631.025   | 632.250   | 620.600          | 621.975          |                  |

**L3 FREQUENCY BAND (638.000 - 698.000 MHz)**

|                | <b>TV<br/>42 &amp; 47</b> | <b>TV<br/>43 &amp; 48</b> | <b>TV<br/>44 &amp; 49</b> | <b>TV<br/>45 &amp; 50</b> | <b>TV<br/>46 &amp; 51</b> | <b>All Bands</b> | <b>All Bands</b> | <b>Full<br/>Spectrum</b> | <b>Full<br/>Spectrum</b> | <b>Full<br/>Spectrum</b> |
|----------------|---------------------------|---------------------------|---------------------------|---------------------------|---------------------------|------------------|------------------|--------------------------|--------------------------|--------------------------|
| <b>Channel</b> | <b>Group 1</b>            | <b>Group 2</b>            | <b>Group 3</b>            | <b>Group 4</b>            | <b>Group 5</b>            | <b>Group 6</b>   | <b>Group 7</b>   | <b>Group 8</b>           | <b>Group 9</b>           | <b>Group 10</b>          |
| 1              | 638.350                   | 644.350                   | 650.350                   | 656.350                   | 662.350                   | 643.775          | 649.800          | 638.100                  | 638.900                  | 638.050                  |
| 2              | 638.850                   | 644.850                   | 650.850                   | 656.850                   | 662.850                   | 644.375          | 650.800          | 638.825                  | 639.625                  | 638.550                  |
| 3              | 639.575                   | 645.575                   | 651.575                   | 657.575                   | 663.575                   | 651.900          | 653.000          | 639.350                  | 640.150                  | 639.500                  |
| 4              | 640.500                   | 646.500                   | 652.500                   | 658.500                   | 664.500                   | 654.150          | 659.550          | 640.375                  | 641.175                  | 639.900                  |
| 5              | 641.625                   | 647.625                   | 653.625                   | 659.625                   | 665.625                   | 660.375          | 660.775          | 641.725                  | 642.525                  | 640.750                  |
| 6              | 642.450                   | 648.450                   | 654.450                   | 660.450                   | 666.450                   | 661.125          | 661.350          | 642.350                  | 643.150                  | 643.750                  |
| 7              | 643.075                   | 649.075                   | 655.075                   | 661.075                   | 667.075                   | 662.875          | 665.425          | 645.150                  | 645.950                  | 650.500                  |
| 8              | 643.475                   | 649.475                   | 655.475                   | 661.475                   | 667.475                   | 664.300          | 668.050          | 650.250                  | 651.050                  | 652.600                  |
| 9              | 668.125                   | 674.125                   | 680.125                   | 686.125                   | 692.125                   | 667.125          | 675.575          | 650.675                  | 651.475                  | 654.150                  |
| 10             | 668.650                   | 674.650                   | 680.650                   | 686.650                   | 692.650                   | 669.500          | 679.750          | 652.750                  | 653.550                  | 658.925                  |
| 11             | 669.675                   | 675.675                   | 681.675                   | 687.675                   | 693.675                   | 679.000          | 683.450          | 654.625                  | 655.425                  | 661.750                  |
| 12             | 671.025                   | 677.025                   | 683.025                   | 689.025                   | 695.025                   | 683.525          | 684.875          | 663.475                  | 664.275                  | 665.500                  |
| 13             | 671.750                   | 677.750                   | 683.750                   | 689.750                   | 695.750                   | 688.825          | 686.800          | 664.700                  | 665.500                  | 666.425                  |
| 14             | 672.150                   | 678.150                   | 684.150                   | 690.150                   | 696.150                   | 689.750          | 691.750          | 667.325                  | 668.125                  | 667.875                  |
| 15             | 672.975                   | 678.975                   | 684.975                   | 690.975                   | 696.975                   | 690.425          | 692.300          | 668.775                  | 669.575                  | 670.500                  |
| 16             | 673.600                   | 679.600                   | 685.600                   | 691.600                   | 697.600                   | 691.500          | 693.050          | 669.700                  | 670.500                  | 671.725                  |
| 17             |                           |                           |                           |                           |                           | 693.525          | 693.500          | 673.450                  | 674.250                  | 680.575                  |
| 18             |                           |                           |                           |                           |                           | 694.725          | 695.550          | 676.275                  | 677.075                  | 682.450                  |
| 19             |                           |                           |                           |                           |                           | 697.075          | 696.200          | 681.050                  | 681.850                  | 684.525                  |
| 20             |                           |                           |                           |                           |                           | 697.575          | 697.100          | 682.600                  | 683.400                  | 684.950                  |
| 21             |                           |                           |                           |                           |                           | 649.125          | 645.875          | 684.700                  | 685.500                  | 690.050                  |
| 22             |                           |                           |                           |                           |                           | 658.825          | 658.800          | 691.450                  | 692.250                  | 692.850                  |
| 23             |                           |                           |                           |                           |                           | 662.200          | 663.675          | 694.450                  | 695.250                  | 693.475                  |
| 24             |                           |                           |                           |                           |                           | 677.025          | 664.800          | 695.300                  | 696.100                  | 694.825                  |
| 25             |                           |                           |                           |                           |                           | 682.675          | 678.400          | 695.700                  | 696.500                  | 695.850                  |
| 26             |                           |                           |                           |                           |                           | 650.050          | 646.825          | 696.650                  | 697.450                  | 696.375                  |
| 27             |                           |                           |                           |                           |                           | 651.450          | 648.050          | 697.150                  | 697.950                  | 697.100                  |
| 28             |                           |                           |                           |                           |                           | 671.075          | 651.275          | 643.850                  | 644.650                  | 642.450                  |
| 29             |                           |                           |                           |                           |                           | 677.600          | 657.075          | 668.300                  | 669.100                  | 666.900                  |
| 30             |                           |                           |                           |                           |                           | 695.200          | 662.350          | 692.750                  | 693.550                  | 691.350                  |
| 31             |                           |                           |                           |                           |                           | 647.450          | 674.950          | 649.350                  | 650.150                  | 644.425                  |
| 32             |                           |                           |                           |                           |                           | 648.400          | 679.350          | 653.950                  | 654.750                  | 648.625                  |
| 33             |                           |                           |                           |                           |                           | 666.000          | 680.750          | 657.925                  | 658.725                  | 649.675                  |
| 34             |                           |                           |                           |                           |                           | 675.900          | 682.500          | 681.950                  | 682.750                  | 653.250                  |
| 35             |                           |                           |                           |                           |                           | 679.525          | 685.450          | 685.525                  | 686.325                  | 677.275                  |
| 36             |                           |                           |                           |                           |                           | 696.250          | 689.700          | 686.575                  | 687.375                  | 681.250                  |
| 37             |                           |                           |                           |                           |                           |                  |                  | 690.775                  | 691.575                  | 685.850                  |
| 38             |                           |                           |                           |                           |                           |                  |                  | 655.750                  | 656.550                  | 645.775                  |
| 39             |                           |                           |                           |                           |                           |                  |                  | 671.700                  | 672.500                  | 663.500                  |
| 40             |                           |                           |                           |                           |                           |                  |                  | 689.425                  | 690.225                  | 679.450                  |

**Q9 FREQUENCY BAND (740.000-805.975 MHz)**

|                | <b>TV<br/>59 &amp; 64</b> | <b>TV<br/>60 &amp; 65</b> | <b>TV<br/>61 &amp; 66</b> | <b>TV<br/>62 &amp; 67</b> | <b>TV<br/>63 &amp; 68</b> | <b>TV<br/>59 &amp; 62 &amp; 69</b> | <b>TV<br/>60 &amp; 65 &amp; 68</b> | <b>Full<br/>Spectrum</b> | <b>Full<br/>Spectrum</b> | <b>Full<br/>Spectrum</b> |
|----------------|---------------------------|---------------------------|---------------------------|---------------------------|---------------------------|------------------------------------|------------------------------------|--------------------------|--------------------------|--------------------------|
| <b>Channel</b> | <b>Group 1</b>            | <b>Group 2</b>            | <b>Group 3</b>            | <b>Group 4</b>            | <b>Group 5</b>            | <b>Group 6</b>                     | <b>Group 7</b>                     | <b>Group 8</b>           | <b>Group 9</b>           | <b>Group 10</b>          |
| 1              | 740.350                   | 746.350                   | 752.350                   | 758.350                   | 764.350                   | 740.050                            | 746.075                            | 740.025                  | 741.075                  | 740.225                  |
| 2              | 740.850                   | 746.850                   | 752.850                   | 758.850                   | 764.850                   | 740.575                            | 746.925                            | 740.725                  | 742.325                  | 740.925                  |
| 3              | 741.575                   | 747.575                   | 753.575                   | 759.575                   | 765.575                   | 742.000                            | 747.325                            | 742.100                  | 743.300                  | 742.300                  |
| 4              | 742.500                   | 748.500                   | 754.500                   | 760.500                   | 766.500                   | 743.725                            | 748.075                            | 744.775                  | 745.000                  | 744.975                  |
| 5              | 743.625                   | 749.625                   | 755.625                   | 761.625                   | 767.625                   | 744.625                            | 749.775                            | 745.375                  | 745.875                  | 745.575                  |
| 6              | 744.450                   | 750.450                   | 756.450                   | 762.450                   | 768.450                   | 745.250                            | 750.275                            | 746.525                  | 746.350                  | 746.725                  |
| 7              | 745.075                   | 751.075                   | 757.075                   | 763.075                   | 769.075                   | 758.300                            | 751.250                            | 750.475                  | 747.925                  | 750.675                  |
| 8              | 745.475                   | 751.475                   | 757.475                   | 763.475                   | 769.475                   | 758.700                            | 751.875                            | 751.475                  | 748.700                  | 751.675                  |
| 9              | 770.125                   | 776.125                   | 782.125                   | 788.125                   | 794.125                   | 759.425                            | 776.125                            | 753.425                  | 758.975                  | 753.625                  |
| 10             | 770.650                   | 776.650                   | 782.650                   | 788.650                   | 794.650                   |                                    |                                    |                          |                          |                          |

### H4E FREQUENCY BAND (518.000 - 578.000 MHz)

| Channel | Full Range<br>max. # of<br>comp. fre-<br>quencies<br>(option 1) | Full Range<br>max. # of<br>comp. fre-<br>quencies<br>(option 2) | France<br>preferred:<br>User Group<br>A<br>(option 1) | France<br>preferred:<br>User Group<br>A<br>(option 2) | France<br>preferred:<br>User Group<br>B<br>(option 1) | France<br>preferred:<br>User Group<br>B<br>(option 2) | France<br>preferred:<br>User Group<br>C<br>(option 1) | France<br>preferred:<br>User Group<br>C<br>(option 2) | All Bands<br>Group 9 | All Bands<br>Group 10 |
|---------|---|---|---|---|---|---|---|---|----------------------|-----------------------|
|         | Group 1   | Group 2   | Group 3   | Group 4   | Group 5   | Group 6   | Group 7   | Group 8   |                      |                       |
| 1       | 518.100   | 518.900   | 518.750   | 518.750   | 518.100   | 518.500   | 520.225   | 518.300   | 518.500              | 518.575               |
| 2       | 518.825   | 519.625   | 519.500   | 519.500   | 521.500   | 520.025   | 522.025   | 519.000   | 522.250              | 520.300               |
| 3       | 519.350   | 520.150   | 521.250   | 520.500   | 522.975   | 522.225   | 522.775   | 522.025   | 523.675              | 521.750               |
| 4       | 520.375   | 521.175   | 523.250   | 521.750   | 525.700   | 522.975   | 525.900   | 524.000   | 524.500              | 522.300               |
| 5       | 521.725   | 522.525   | 524.250   | 523.250   | 532.500   | 524.900   | 526.300   | 530.025   | 526.350              | 526.350               |
| 6       | 522.350   | 523.150   | 527.500   | 526.750   | 532.900   | 530.225   | 533.500   | 532.700   | 528.000              | 527.525               |
| 7       | 525.150   | 525.950   | 535.250   | 527.250   | 534.500   | 536.775   | 535.000   | 533.500   | 528.500              | 527.975               |
| 8       | 530.250   | 531.050   | 536.500   | 531.500   | 538.975   | 540.900   | 536.225   | 533.900   | 531.900              | 531.800               |
| 9       | 530.675   | 531.475   | 543.750   | 537.250   | 544.775   | 545.500   | 541.500   | 542.300   | 535.075              | 535.400               |
| 10      | 532.750   | 533.550   | 547.750   | 547.500   | 546.975   | 549.300   | 550.300   | 546.775   | 542.700              | 536.275               |
| 11      | 534.625   | 535.425   | 548.250   | 550.750   | 550.100   | 550.500   | 557.100   | 549.900   | 543.425              | 540.975               |
| 12      | 543.475   | 544.275   | 550.750   | 554.500   | 561.500   | 556.500   | 560.975   | 560.225   | 552.550              | 547.975               |
| 13      | 544.700   | 545.500   | 552.500   | 562.500   | 565.300   | 566.900   | 562.775   | 560.975   | 553.725              | 551.225               |
| 14      | 547.325   | 548.125   | 561.750   | 563.500   | 565.700   | 568.025   | 568.225   | 568.225   | 565.425              | 551.950               |
| 15      | 548.775   | 549.575   | 567.500   | 569.250   | 568.025   | 570.975   | 570.775   | 570.775   | 566.025              | 552.950               |
| 16      | 549.700   | 550.500   | 571.250   | 571.750   | 572.500   | 572.900   | 572.000   | 572.700   | 568.125              | 557.250               |
| 17      | 553.450   | 554.250   | 574.750   | 572.250   | 574.100   | 573.700   | 572.700   | 573.100   | 571.675              | 558.400               |
| 18      | 556.275   | 557.075   | 575.750   | 575.750   | 576.025   | 576.025   | 574.300   | 574.300   | 572.150              | 558.800               |
| 19      | 561.050   | 561.850   | 577.250   | 576.500   | 577.500   | 577.500   | 576.975   | 576.975   | 573.675              | 561.800               |
| 20      | 562.600   | 563.400   | 577.750   | 577.750   | 520.775   | 518.100   | 520.975   | 520.975   | 576.650              | 568.375               |
| 21      | 564.700   | 565.500   | 520.500   | 528.500   | 534.100   | 525.300   | 525.100   | 528.225   | 536.075              | 525.650               |
| 22      | 571.450   | 572.250   | 521.750   | 529.250   | 538.225   | 528.775   | 536.975   | 540.700   | 556.975              | 553.600               |
| 23      | 574.450   | 575.250   | 530.500   | 530.500   | 540.900   | 533.300   | 540.000   | 544.225   | 560.575              | 567.575               |
| 24      | 575.300   | 576.100   | 531.250   | 538.500   | 541.700   | 533.700   | 542.300   | 550.300   | 519.125              | 523.575               |
| 25      | 575.700   | 576.500   | 534.750   | 540.250   | 546.225   | 546.225   | 556.000   | 556.000   | 521.700              | 533.050               |
| 26      | 576.650   | 577.450   | 537.250   | 543.750   | 549.700   | 549.700   | 556.700   | 556.700   | 539.550              | 556.700               |
| 27      | 577.150   | 577.950   | 540.250   | 544.500   | 552.025   | 552.025   | 557.900   | 557.100   | 554.600              | 566.125               |
| 28      | 523.850   | 524.650   | 546.500   | 545.750   | 560.775   | 554.975   | 566.300   | 557.900   | 558.050              | 572.000               |
| 29      | 548.300   | 549.100   | 551.500   | 551.500   | 564.500   | 565.700   | 575.000   | 562.775   | 539.025              | 518.050               |
| 30      | 572.750   | 573.550   | 554.500   | 552.500   | 566.500   | 568.775   | 576.225   | 566.300   | 540.725              | 536.675               |
| 31      | 529.350   | 530.150   | 555.500   | 556.250   | 573.700   | 572.500   |   |   | 545.100              | 538.375               |
| 32      | 533.950   | 534.750   | 560.500   | 558.750   |   |   |   |   | 556.125              | 571.175               |
| 33      | 537.925   | 538.725   | 563.500   | 559.750   |   |   |   |   | 557.400              | 573.100               |
| 34      | 561.950   | 562.750   | 564.250   | 567.500   |   |   |   |   | 570.000              | 575.250               |
| 35      | 565.525   | 566.325   | 569.250   | 568.500   |   |   |   |   |                      |                       |
| 36      | 566.575   | 567.375   | 570.500   | 569.750   |   |   |   |   |                      |                       |
| 37      | 570.775   | 571.575   |   |   |   |   |   |   |                      |                       |
| 38      | 535.750   | 536.550   |   |   |   |   |   |   |                      |                       |

**J5E FREQUENCY BAND (578.000 - 638.000 MHz) (Continued)**

| Channel | Group 1 | Group 2 | Group 3 | Group 4 | Group 5 | Group 6 | Group 7 | Group 8 | Group 9 | Group 10 |
|---------|---------|---------|---------|---------|---------|---------|---------|---------|---------|----------|
| 20      | 630.200 | 627.175 | 636.250 | 636.250 | 580.500 | 637.700 | 637.900 | 637.500 | 634.950 | 626.625  |
| 21      | 631.175 | 628.650 | 583.750 | 580.250 | 584.775 | 586.225 | 578.025 | 584.225 | 594.000 | 586.250  |
| 22      | 632.375 | 631.325 | 585.250 | 587.750 | 596.900 | 588.500 | 594.025 | 596.000 | 620.625 | 595.375  |
| 23      | 632.875 | 633.375 | 599.500 | 590.750 | 598.100 | 589.300 | 594.775 | 598.300 | 629.750 | 622.000  |
| 24      | 635.825 | 634.250 | 600.500 | 594.500 | 598.500 | 600.025 | 596.700 | 605.100 | 579.850 | 593.850  |
| 25      | 636.900 | 636.600 | 601.750 | 599.750 | 600.775 | 604.500 | 606.300 | 608.975 | 580.950 | 607.800  |
| 26      | 637.625 | 637.625 | 602.500 | 601.750 | 610.225 | 605.700 | 610.025 | 620.700 | 586.800 | 629.200  |
| 27      | 581.200 | 581.775 | 603.750 | 602.500 | 616.775 | 614.100 | 621.900 | 621.900 | 608.200 | 635.050  |
| 28      | 586.450 | 592.150 | 606.750 | 603.500 | 621.700 | 621.700 | 626.775 | 622.300 | 622.150 | 636.150  |
| 29      | 592.725 | 594.275 | 608.500 | 611.250 | 626.225 | 626.225 | 630.300 | 624.225 | 598.250 | 581.900  |
| 30      | 597.900 | 595.825 | 609.250 | 615.500 | 630.100 | 626.975 | 631.000 | 630.300 | 606.250 | 598.100  |
| 31      | 598.600 | 598.850 | 612.250 | 619.250 | 634.225 | 630.100 |         |         | 611.900 | 603.050  |
| 32      | 604.000 | 600.400 | 619.500 | 620.250 | 634.975 | 636.500 |         |         | 612.950 | 604.100  |
| 33      | 605.350 | 601.550 | 620.250 | 625.250 |         |         |         |         | 617.900 | 609.750  |
| 34      | 614.450 | 610.650 | 625.250 | 626.500 |         |         |         |         | 634.100 | 617.750  |
| 35      | 615.600 | 612.000 | 626.500 | 631.500 |         |         |         |         |         |          |
| 36      | 617.150 | 617.400 | 633.750 | 632.500 |         |         |         |         |         |          |
| 37      | 620.175 | 618.100 |         |         |         |         |         |         |         |          |
| 38      | 621.725 | 623.275 |         |         |         |         |         |         |         |          |
| 39      | 623.850 | 629.550 |         |         |         |         |         |         |         |          |
| 40      | 634.225 | 634.800 |         |         |         |         |         |         |         |          |

**L3E FREQUENCY BAND (638.00 - 698.000 MHz)**

|         | Full Range max. # of comp. frequencies (option 1) | Full Range max. # of comp. frequencies (option 2) | France preferred: User Group A (option 1) | France preferred: User Group A (option 2) | France preferred: User Group B (option 1) | France preferred: User Group B (option 2) | France preferred: User Group C (option 1) | France preferred: User Group C (option 2) | All Bands | All Bands |
|---------|---|---|---|---|---|---|---|---|-----------|-----------|
| Channel | Group 1   | Group 2   | Group 3                                   | Group 4                                   | Group 5                                   | Group 6                                   | Group 7                                   | Group 8                                   | Group 9   | Group 10  |
| 1       | 638.100   | 638.900   | 639.500                                   | 639.500                                   | 640.775                                   | 638.500                                   | 640.225                                   | 639.000                                   | 647.625   | 639.350   |
| 2       | 638.825   | 639.625   | 640.500                                   | 640.500                                   | 642.225                                   | 640.775                                   | 640.975                                   | 640.225                                   | 654.200   | 642.325   |
| 3       | 639.350   | 640.150   | 641.250                                   | 641.750                                   | 645.300                                   | 645.300                                   | 642.025                                   | 640.975                                   | 657.200   | 643.850   |
| 4       | 640.375   | 641.175   | 641.750                                   | 643.250                                   | 646.100                                   | 650.225                                   | 644.700                                   | 642.025                                   | 657.600   | 644.325   |
| 5       | 641.725   | 642.525   | 643.250                                   | 643.750                                   | 648.025                                   | 650.975                                   | 646.300                                   | 644.700                                   | 658.750   | 647.875   |
| 6       | 642.350   | 643.150   | 646.750                                   | 647.250                                   | 650.975                                   | 652.900                                   | 653.100                                   | 652.700                                   | 663.050   | 649.975   |
| 7       | 645.150   | 645.950   | 651.500                                   | 655.500                                   | 660.500                                   | 654.100                                   | 653.500                                   | 653.100                                   | 664.050   | 650.575   |
| 8       | 650.250   | 651.050   | 655.500                                   | 657.250                                   | 660.900                                   | 654.500                                   | 656.975                                   | 660.000                                   | 664.775   | 662.275   |
| 9       | 650.675   | 651.475   | 667.250                                   | 665.750                                   | 662.100                                   | 658.225                                   | 661.100                                   | 662.300                                   | 668.025   | 663.450   |
| 10      | 652.750   | 653.550   | 672.500                                   | 671.750                                   | 668.500                                   | 670.500                                   | 666.025                                   | 668.700                                   | 675.025   | 672.575   |
| 11      | 654.625   | 655.425   | 673.750                                   | 672.500                                   | 672.775                                   | 678.100                                   | 666.775                                   | 669.500                                   | 679.725   | 673.300   |
| 12      | 663.475   | 664.275   | 679.250                                   | 675.250                                   | 680.025                                   | 680.775                                   | 680.225                                   | 680.975                                   | 680.600   | 680.925   |
| 13      | 664.700   | 665.500   | 679.750                                   | 676.250                                   | 681.500                                   | 682.975                                   | 682.025                                   | 685.900                                   | 684.200   | 684.100   |
| 14      | 667.325   | 668.125   | 681.250                                   | 682.500                                   | 690.975                                   | 684.900                                   | 685.500                                   | 687.000                                   | 688.025   | 687.500   |
| 15      | 668.775   | 669.575   | 683.750                                   | 684.250                                   | 692.900                                   | 686.500                                   | 688.225                                   | 692.700                                   | 688.475   | 688.000   |
| 16      | 669.700   | 670.500   | 687.500                                   | 687.500                                   | 694.100                                   | 692.900                                   | 692.000                                   | 693.900                                   | 689.650   | 689.650   |
| 17      | 673.450   | 674.250   | 692.250                                   | 691.750                                   | 694.500                                   | 693.700                                   | 692.700                                   | 694.300                                   | 693.700   | 691.500   |
| 18      | 676.275   | 677.075   | 695.500                                   | 695.750                                   | 696.775                                   | 696.025                                   | 693.100                                   | 696.225                                   | 694.250   | 692.325   |
| 19      | 681.050   | 681.850   | 696.500                                   | 697.250                                   | 697.500                                   | 697.500                                   | 693.900                                   | 696.975                                   | 695.700   | 693.750   |
| 20      | 682.600   | 683.400   | 697.250                                   | 697.750                                   | 638.100                                   | 638.100                                   | 696.975                                   | 650.775                                   | 697.425   | 697.500   |
| 21      | 684.700   | 685.500   | 638.750                                   | 641.250                                   | 648.775                                   | 644.900                                   | 652.000                                   | 656.225                                   | 648.425   | 655.425   |
| 22      | 691.450   | 692.250   | 647.250                                   | 647.750                                   | 650.225                                   | 648.775                                   | 658.025                                   | 663.000                                   | 662.400   | 659.025   |
| 23      | 694.450   | 695.250   | 649.250                                   | 648.500                                   | 661.700                                   | 657.500                                   | 658.775                                   | 664.975                                   | 690.350   | 679.925   |
| 24      | 695.300   | 696.100   | 649.750                                   | 657.750                                   | 666.225                                   | 666.975                                   | 668.000                                   | 672.225                                   | 644.000   | 657.950   |
| 25      | 695.700   | 696.500   | 650.500                                   | 658.500                                   | 666.975                                   | 669.300                                   | 680.975                                   | 682.775                                   | 649.875   | 661.400   |
| 26      | 696.650   | 697.450   | 660.250                                   | 662.750                                   | 669.300                                   | 670.100                                   | 684.700                                   | 685.100                                   | 659.300   | 676.450   |
| 27      | 697.150   | 697.950   | 662.750                                   | 663.500                                   | 669.700                                   | 672.775                                   | 685.900                                   | 686.300                                   | 682.950   | 694.300   |
| 28      | 643.850   | 644.650   | 664.500                                   | 665.250                                   | 682.225                                   | 684.500                                   |   |   | 692.425   | 696.875   |
| 29      | 668.300   | 669.100   | 666.500                                   | 667.500                                   | 685.700                                   | 692.500                                   |   |   | 640.750   | 646.000   |
| 30      | 692.750   | 693.550   | 671.500                                   | 671.250                                   | 686.100                                   | 694.100                                   |   |   | 642.900   | 658.600   |
| 31      | 649.350   | 650.150   | 674.500                                   | 674.500                                   |   |   |   |   | 644.825   | 659.875   |
| 32      | 653.950   | 654.750   | 684.250                                   | 688.500                                   |   |   |   |   | 677.625   | 670.900   |
| 33      | 657.925   | 658.725   | 689.750                                   | 689.250                                   |   |   |   |   | 679.325   | 675.275   |
| 34      | 681.950   | 682.750   | 691.750                                   | 691.250                                   |   |   |   |   | 697.950   | 676.975   |
| 35      | 685.525   | 686.325   | 697.750                                   | 695.250                                   |   |   |   |   |           |           |
| 36      | 686.575   | 687.375   |   |   |   |   |   |   |           |           |
| 37      | 690.775   | 691.575   |   |   |   |   |   |   |           |           |
| 38      | 655.750   | 656.550   |   |   |   |   |   |   |           |           |
| 39      | 671.700   | 672.500   |   |   |   |   |   |   |           |           |
| 40      | 689.425   | 690.225   |   |   |   |   |   |   |           |           |



**Q5 FREQUENCY BAND (740.000 - 814.000 MHz)**

|         | Full Range max. # of comp. frequencies (option 1) | Full Range max. # of comp. frequencies (option 2) | Full Range max. # of comp. frequencies (option 3) | Full Range max. # of comp. frequencies (option 4) | France preferred: User Group A (option 1) | France preferred: User Group A (option 2) | France preferred: User Group A (option 3) | France preferred: User Group B (option 1) | France preferred: User Group B (option 2) | France preferred: User Group B (option 3) |
|---------|---|---|---|---|---|---|---|---|---|---|
| Channel | Group 1   | Group 2   | Group 3   | Group 4   | Group 5                                   | Group 6                                   | Group 7                                   | Group 8                                   | Group 9                                   | Group 10                                  |
| 1       | 740.300   | 740.425   | 740.100   | 740.625   | 740.250                                   | 740.250                                   | 742.750                                   | 740.900                                   | 740.500                                   | 740.900                                   |
| 2       | 740.825   | 740.850   | 740.625   | 741.050   | 742.750                                   | 743.250                                   | 743.500                                   | 741.300                                   | 740.900                                   | 741.300                                   |
| 3       | 742.400   | 742.100   | 742.200   | 742.300   | 743.250                                   | 743.750                                   | 745.250                                   | 742.100                                   | 742.100                                   | 746.975                                   |
| 4       | 742.800   | 742.650   | 742.600   | 742.850   | 744.500                                   | 745.250                                   | 746.500                                   | 744.025                                   | 744.025                                   | 748.900                                   |
| 5       | 745.000   | 744.025   | 744.800   | 744.225   | 746.500                                   | 746.500                                   | 747.500                                   | 745.500                                   | 744.775                                   | 749.700                                   |
| 6       | 745.975   | 744.675   | 745.775   | 744.875   | 747.250                                   | 753.750                                   | 751.750                                   | 749.300                                   | 746.225                                   | 752.025                                   |
| 7       | 748.850   | 745.600   | 748.650   | 745.800   | 752.500                                   | 755.500                                   | 753.250                                   | 754.225                                   | 756.900                                   | 753.500                                   |
| 8       | 749.950   | 750.050   | 749.750   | 750.250   | 759.750                                   | 763.500                                   | 753.750                                   | 760.025                                   | 761.500                                   | 764.500                                   |
| 9       | 753.350   | 752.625   | 753.150   | 752.825   | 767.500                                   | 769.250                                   | 758.750                                   | 770.975                                   | 764.500                                   | 768.775                                   |
| 10      | 756.100   | 753.525   | 755.900   | 753.725   | 768.500                                   | 771.250                                   | 771.750                                   | 774.100                                   | 770.975                                   | 774.100                                   |
| 11      | 764.875   | 758.825   | 764.675   | 759.025   | 769.750                                   | 772.250                                   | 775.500                                   | 774.500                                   | 772.900                                   | 776.025                                   |
| 12      | 770.150   | 766.275   | 769.950   | 766.475   | 771.750                                   | 774.750                                   | 776.500                                   | 781.300                                   | 773.300                                   | 778.975                                   |
| 13      | 771.800   | 769.350   | 771.600   | 769.550   | 772.250                                   | 775.500                                   | 777.750                                   | 782.500                                   | 776.775                                   | 781.700                                   |
| 14      | 772.575   | 770.025   | 772.375   | 770.225   | 786.500                                   | 785.750                                   | 787.500                                   | 784.025                                   | 778.225                                   | 782.500                                   |
| 15      | 774.325   | 771.300   | 774.125   | 771.500   | 794.500                                   | 791.750                                   | 791.500                                   | 786.225                                   | 778.975                                   | 784.775                                   |
| 16      | 776.625   | 777.375   | 776.425   | 777.575   | 796.250                                   | 795.500                                   | 799.750                                   | 786.975                                   | 796.500                                   | 796.500                                   |
| 17      | 782.700   | 779.675   | 782.500   | 779.875   | 799.750                                   | 800.500                                   | 801.750                                   | 802.975                                   | 797.700                                   | 800.775                                   |
| 18      | 783.975   | 781.425   | 783.775   | 781.625   | 803.500                                   | 801.250                                   | 803.250                                   | 806.100                                   | 806.500                                   | 804.500                                   |
| 19      | 784.650   | 782.200   | 784.450   | 782.400   | 806.750                                   | 803.250                                   | 804.250                                   | 808.025                                   | 808.025                                   | 805.700                                   |
| 20      | 787.725   | 783.850   | 787.525   | 784.050   | 807.500                                   | 807.500                                   | 807.500                                   | 809.500                                   | 810.225                                   | 810.225                                   |
| 21      | 795.175   | 789.125   | 794.975   | 789.325   | 809.750                                   | 808.500                                   | 809.250                                   | 812.500                                   | 810.975                                   | 810.975                                   |
| 22      | 800.475   | 797.900   | 800.275   | 798.100   | 811.750                                   | 809.750                                   | 809.750                                   | 813.300                                   | 813.700                                   | 812.900                                   |
| 23      | 801.325   | 800.650   | 801.125   | 800.850   | 812.250                                   | 811.500                                   | 810.500                                   | 813.700                                   | 753.500                                   | 813.300                                   |
| 24      | 803.950   | 804.050   | 803.750   | 804.250   | 748.250                                   | 745.750                                   | 744.500                                   | 746.225                                   | 754.975                                   | 744.775                                   |
| 25      | 808.400   | 805.150   | 808.200   | 805.350   | 750.750                                   | 750.750                                   | 745.750                                   | 753.500                                   | 757.700                                   | 746.225                                   |
| 26      | 809.325   | 808.025   | 809.125   | 808.225   | 755.750                                   | 752.500                                   | 751.250                                   | 758.100                                   | 766.500                                   | 750.100                                   |
| 27      | 809.975   | 809.000   | 809.775   | 809.200   | 759.250                                   | 753.250                                   | 754.500                                   | 758.500                                   | 781.700                                   | 765.300                                   |
| 28      | 811.350   | 811.200   | 811.150   | 811.400   | 762.500                                   | 754.500                                   | 755.500                                   | 765.300                                   | 788.500                                   | 768.025                                   |
| 29      | 811.900   | 811.600   | 811.700   | 811.800   | 763.500                                   | 758.750                                   | 759.500                                   | 768.775                                   | 789.300                                   | 772.500                                   |
| 30      | 813.150   | 813.175   | 812.950   | 813.375   | 766.750                                   | 760.500                                   | 760.500                                   | 769.500                                   | 792.025                                   | 773.700                                   |
| 31      | 813.575   | 813.700   | 813.375   | 813.900   | 770.500                                   | 767.500                                   | 766.750                                   | 772.900                                   | 792.775                                   | 781.300                                   |
| 32      | 754.400   | 751.050   | 754.200   | 751.250   | 775.500                                   | 770.500                                   | 770.500                                   | 788.900                                   | 797.300                                   | 792.025                                   |
| 33      | 768.000   | 772.025   | 767.800   | 772.225   | 779.500                                   | 776.500                                   | 771.250                                   | 797.300                                   | 798.500                                   | 794.975                                   |
| 34      | 778.000   | 776.000   | 777.800   | 776.200   | 782.750                                   | 777.750                                   | 779.500                                   | 801.500                                   | 800.775                                   | 797.300                                   |
| 35      | 781.975   | 786.000   | 781.775   | 786.200   | 783.250                                   | 779.250                                   | 782.750                                   |   |   |   |
| 36      | 802.950   | 799.600   | 802.750   | 799.800   | 784.500                                   | 782.750                                   | 784.500                                   |   |   |   |
| 37      | 743.550   | 746.200   | 743.350   | 746.400   | 785.250                                   | 784.500                                   | 785.250                                   |   |   |   |
| 38      | 750.400   | 755.625   | 750.200   | 755.825   | 788.250                                   | 785.250                                   | 785.750                                   |   |   |   |
| 39      | 751.425   | 768.400   | 751.225   | 768.600   | 791.750                                   | 786.500                                   | 786.500                                   |   |   |   |
| 40      | 785.600   | 802.575   | 785.400   | 802.775   | 795.500                                   | 788.250                                   | 790.750                                   |   |   |   |
| 41      | 798.375   | 803.600   | 798.175   | 803.800   | 798.750                                   | 796.250                                   | 793.250                                   |   |   |   |
| 42      | 807.800   | 810.450   | 807.600   | 810.650   | 800.500                                   | 801.750                                   | 800.500                                   |   |   |   |
| 43      | 767.400   | 754.825   | 767.200   | 755.025   | 808.500                                   | 810.500                                   | 808.500                                   |   |   |   |
| 44      | 768.950   | 758.375   | 768.750   | 758.575   | 810.500                                   | 812.250                                   | 812.250                                   |   |   |   |
| 45      | 769.700   | 763.725   | 769.500   | 763.925   |   |   |   |   |   |   |
| 46      | 790.275   | 784.300   | 790.075   | 784.500   |   |   |   |   |   |   |
| 47      | 795.625   | 785.050   | 795.425   | 785.250   |   |   |   |   |   |   |
| 48      | 799.175   | 786.600   | 798.975   | 786.800   |   |   |   |   |   |   |

**Q5 (Continued)**

|         | France preferred: User Group C (option 1) | France preferred: User Group C (option 2) | France preferred: User Group C (option 3) | Germany preferred: User Group 1 790-814 MHz | Germany preferred: User Group 2 790-814 MHz | Germany preferred: User Group 3A 790-814 MHz | Germany preferred: User Group 3B 790-814 MHz | Germany preferred: User Group 3C 790-814 MHz | Germany preferred: User Group 3D 790-814 MHz | Germany preferred: User Group 4 790-814 MHz |
|---------|---|---|---|---|---|--|--|--|--|---|
| Channel | Group 11                                  | Group 12                                  | Group 13                                  | Group 14                                    | Group 15                                    | Group 16                                     | Group 17                                     | Group 18                                     | Group 19                                     | Group 20                                    |
| 1       | 741.100                                   | 740.700                                   | 741.100                                   | 790.100                                     | 790.100                                     | 790.250                                      | 790.300                                      | 790.350                                      | 790.400                                      | 791.475                                     |
| 2       | 741.900                                   | 741.100                                   | 741.500                                   | 791.050                                     | 791.575                                     | 792.325                                      | 791.250                                      | 791.300                                      | 790.800                                      | 792.525                                     |
| 3       | 742.300                                   | 742.300                                   | 742.300                                   | 793.575                                     | 792.050                                     | 792.900                                      | 792.950                                      | 794.925                                      | 798.800                                      | 793.200                                     |
| 4       | 743.000                                   | 743.000                                   | 744.975                                   | 794.675                                     | 794.425                                     | 793.725                                      | 794.875                                      | 795.450                                      | 803.500                                      | 795.625                                     |
| 5       | 748.700                                   | 750.300                                   | 746.025                                   | 803.200                                     | 796.250                                     | 795.350                                      | 795.400                                      | 801.000                                      | 804.725                                      | 797.125                                     |
| 6       | 751.000                                   | 752.975                                   | 748.000                                   | 804.425                                     | 797.500                                     | 799.900                                      | 796.150                                      | 803.450                                      | 805.700                                      | 802.525                                     |
| 7       | 754.025                                   | 757.900                                   | 752.225                                   | 806.100                                     | 799.575                                     | 800.900                                      | 798.700                                      | 806.350                                      | 806.400                                      | 804.850                                     |
| 8       | 765.500                                   | 759.000                                   | 757.500                                   | 806.500                                     | 806.600                                     | 807.200                                      | 801.775                                      | 806.750                                      | 808.475                                      | 805.250                                     |
| 9       | 768.225                                   | 770.775                                   | 759.000                                   | 811.200                                     | 809.325                                     | 810.825                                      | 807.950                                      | 808.425                                      | 809.050                                      | 808.550                                     |
| 10      | 768.975                                   | 772.700                                   | 773.100                                   | 811.950                                     | 810.425                                     | 812.100                                      | 808.375                                      | 809.825                                      | 809.875                                      | 809.950                                     |
| 11      | 770.025                                   | 774.300                                   | 773.500                                   | 813.400                                     | 812.950                                     | 812.575                                      | 809.775                                      | 813.650                                      | 810.975                                      | 811.550                                     |
| 12      | 775.000                                   | 778.025                                   | 776.225                                   | 813.900                                     | 813.900                                     | 794.825                                      | 812.625                                      | 793.825                                      | 792.475                                      | 812.850                                     |
| 13      | 778.775                                   | 781.100                                   | 776.975                                   | 796.425                                     | 790.600                                     | 808.325                                      | 806.700                                      | 796.675                                      | 793.875                                      | 813.775                                     |
| 14      | 780.700                                   | 782.300                                   | 780.000                                   | 797.400                                     | 805.500                                     | 811.350                                      | 810.875                                      | 797.650                                      | 794.975                                      | 799.400                                     |

**Q5 (Continued)**

|    |         |         |         |         |         |  |         |         |         |         |
|----|---------|---------|---------|---------|---------|--|---------|---------|---------|---------|
| 15 | 783.000 | 784.975 | 781.900 | 797.900 | 805.900 |  | 811.400 | 809.000 | 795.500 | 810.525 |
| 16 | 797.500 | 786.775 | 784.225 | 800.750 | 808.800 |  | 813.600 | 810.925 | 796.725 |         |
| 17 | 797.900 | 797.900 | 788.700 |         |         |  |         |         |         |         |
| 18 | 799.000 | 800.225 | 802.025 |         |         |  |         |         |         |         |
| 19 | 805.100 | 804.000 | 804.700 |         |         |  |         |         |         |         |
| 20 | 806.300 | 805.100 | 805.100 |         |         |  |         |         |         |         |
| 21 | 808.225 | 807.000 | 805.900 |         |         |  |         |         |         |         |
| 22 | 808.975 | 808.225 | 810.025 |         |         |  |         |         |         |         |
| 23 | 810.775 | 812.700 | 812.000 |         |         |  |         |         |         |         |
| 24 | 813.100 | 813.500 | 813.500 |         |         |  |         |         |         |         |
| 25 | 746.775 | 744.225 | 752.975 |         |         |  |         |         |         |         |
| 26 | 749.100 | 748.700 | 754.025 |         |         |  |         |         |         |         |
| 27 | 752.225 | 749.100 | 756.700 |         |         |  |         |         |         |         |
| 28 | 754.775 | 752.225 | 774.300 |         |         |  |         |         |         |         |
| 29 | 756.700 | 754.775 | 782.300 |         |         |  |         |         |         |         |
| 30 | 764.000 | 764.000 | 788.000 |         |         |  |         |         |         |         |
| 31 | 782.300 | 768.225 | 789.100 |         |         |  |         |         |         |         |
| 32 | 784.225 | 772.000 | 789.900 |         |         |  |         |         |         |         |
| 33 | 784.975 | 780.700 | 792.975 |         |         |  |         |         |         |         |
| 34 | 788.000 | 791.000 | 802.775 |         |         |  |         |         |         |         |
| 35 | 792.225 | 794.025 | 806.300 |         |         |  |         |         |         |         |
| 36 | 813.900 | 794.775 | 810.775 |         |         |  |         |         |         |         |

**Q5 (Continued)**

|         | Germany preferred: User Group 4 790-814 MHz (option 2) | Germany preferred: Fixed Installations 742-790 MHz | Optimized: TV oh. 55 742-750 MHz | Optimized: TV oh. 56 750-758 MHz | Optimized: TV oh. 57 758-766 MHz | Optimized: TV oh. 58 766-774 MHz | Optimized: TV oh. 59 774-782 MHz | Broad-casters preferred: TV oh. 60 782-790 MHz | Optimized: TV oh. 61 790-798 MHz | Optimized: TV oh. 62 798-806 MHz | Netherlands preferred: TV oh. 63 806-814 MHz | Combined UHF-R Q5 and R9: max. # of compatible | Combined UHF-R Q5 and R9: max. # of compatible |
|---------|--|--|----------------------------------|----------------------------------|----------------------------------|----------------------------------|----------------------------------|--|----------------------------------|----------------------------------|--|--|--|
| Channel | Group 21   | Group 22   | Group 23                         | Group 24                         | Group 25                         | Group 26                         | Group 27                         | Group 28                                       | Group 29                         | Group 30                         | Group 31                                     | Group 32                                       | Group 33                                       |
| 1       | 790.925  | 742.750  | 742.100                          | 750.100                          | 758.100                          | 766.100                          | 774.100                          | 782.225  | 790.100                          | 798.100                          | 806.100                                      | 742.000  | 740.175  |
| 2       | 791.400  | 744.625  | 742.925                          | 750.925                          | 758.925                          | 766.925                          | 774.925                          | 782.650  | 790.925                          | 798.925                          | 806.925                                      | 743.200  | 740.900  |
| 3       | 792.625  | 745.100  | 743.525                          | 751.525                          | 759.525                          | 767.525                          | 775.525                          | 783.900  | 791.525                          | 799.525                          | 807.525                                      | 743.850  | 742.300  |
| 4       | 795.025  | 745.975  | 744.575                          | 752.575                          | 760.575                          | 768.575                          | 776.575                          | 784.625  | 792.575                          | 800.575                          | 808.575                                      | 744.800  | 742.850  |
| 5       | 795.650  | 747.650  | 745.900                          | 753.900                          | 761.900                          | 769.900                          | 777.900                          | 785.775  | 793.900                          | 801.900                          | 809.900                                      | 748.175  | 743.975  |
| 6       | 797.050  | 748.225  | 747.650                          | 755.650                          | 763.650                          | 771.650                          | 779.650                          | 786.400  | 795.650                          | 803.650                          | 811.650                                      | 748.650  | 746.550  |
| 7       | 802.000  | 753.225  | 748.050                          | 756.050                          | 764.050                          | 772.050                          | 780.050                          | 787.325  | 796.050                          | 804.050                          | 812.050                                      | 749.500  | 747.550  |
| 8       | 803.575  | 754.750  | 749.200                          | 757.200                          | 765.200                          | 773.200                          | 781.200                          | 787.850  | 797.200                          | 805.200                          | 813.200                                      | 751.250  | 751.525  |
| 9       | 805.750  | 755.950  | 749.900                          | 757.900                          | 765.900                          | 773.900                          | 781.900                          | 788.675  | 797.900                          | 805.900                          | 813.900                                      | 752.750  | 751.925  |
| 10      | 810.300  | 759.350  | 746.600                          | 754.600                          | 762.600                          | 770.600                          | 778.600                          |  | 794.600                          | 802.600                          | 810.600                                      | 758.025  | 765.325  |
| 11      | 811.050  | 762.275  |                                  |                                  |                                  |                                  |                                  |  |                                  |                                  |  | 760.925  | 766.550  |
| 12      | 812.850  | 770.100  |                                  |                                  |                                  |                                  |                                  |  |                                  |                                  |  | 770.900  | 767.425  |
| 13      | 813.775  | 774.375  |                                  |                                  |                                  |                                  |                                  |  |                                  |                                  |  | 774.450  | 773.025  |
| 14      | 799.400  | 775.775  |                                  |                                  |                                  |                                  |                                  |  |                                  |                                  |  | 776.400  | 773.525  |
| 15      | 808.550  | 777.500  |                                  |                                  |                                  |                                  |                                  |  |                                  |                                  |  | 777.475  | 776.625  |
| 16      |  | 779.750  |                                  |                                  |                                  |                                  |                                  |  |                                  |                                  |  | 778.875  | 777.950  |
| 17      |  | 782.550  |                                  |                                  |                                  |                                  |                                  |  |                                  |                                  |  | 783.075  | 781.950  |
| 18      |  | 784.475  |                                  |                                  |                                  |                                  |                                  |  |                                  |                                  |  | 796.800  | 783.775  |
| 19      |  | 785.975  |                                  |                                  |                                  |                                  |                                  |  |                                  |                                  |  | 797.975  | 798.600  |
| 20      |  | 787.050  |                                  |                                  |                                  |                                  |                                  |  |                                  |                                  |  | 804.325  | 804.250  |
| 21      |  | 788.350  |                                  |                                  |                                  |                                  |                                  |  |                                  |                                  |  | 806.225  | 808.800  |
| 22      |  | 788.875  |                                  |                                  |                                  |                                  |                                  |  |                                  |                                  |  | 741.200  | 748.175  |
| 23      |  | 743.500  |                                  |                                  |                                  |                                  |                                  |  |                                  |                                  |  | 773.450  | 752.600  |
| 24      |  | 772.075  |                                  |                                  |                                  |                                  |                                  |  |                                  |                                  |  | 775.700  | 770.875  |
| 25      |  | 755.450  |                                  |                                  |                                  |                                  |                                  |  |                                  |                                  |  | 810.100  | 778.900  |
| 26      |  | 756.750  |                                  |                                  |                                  |                                  |                                  |  |                                  |                                  |  | 745.475  | 783.375  |
| 27      |  | 770.825  |                                  |                                  |                                  |                                  |                                  |  |                                  |                                  |  | 754.900  | 766.125  |
| 28      |  | 772.725  |                                  |                                  |                                  |                                  |                                  |  |                                  |                                  |  | 762.625  | 771.775  |
| 29      |  | 776.450  |                                  |                                  |                                  |                                  |                                  |  |                                  |                                  |  | 768.825  | 786.450  |
| 30      |  | 789.875  |                                  |                                  |                                  |                                  |                                  |  |                                  |                                  |  | 783.575  | 802.075  |
| 31      |  | 760.000  |                                  |                                  |                                  |                                  |                                  |  |                                  |                                  |  | 797.575  | 812.900  |
| 32      |  | 783.925  |                                  |                                  |                                  |                                  |                                  |  |                                  |                                  |  | 755.525  | 745.950  |
| 33      |  |  |                                  |                                  |                                  |                                  |                                  |  |                                  |                                  |  | 756.650  | 749.375  |
| 34      |  |  |                                  |                                  |                                  |                                  |                                  |  |                                  |                                  |  | 758.975  | 763.475  |
| 35      |  |  |                                  |                                  |                                  |                                  |                                  |  |                                  |                                  |  | 781.700  | 788.125  |
| 36      |  |  |                                  |                                  |                                  |                                  |                                  |  |                                  |                                  |  | 807.675  | 800.900  |

### R9 FREQUENCY BAND (790.000-865.000 MHz)

| Channel | Full Range max. # of compatible frequencies (option 1) | Full Range max. # of compatible frequencies (option 2) | Full Range max. # of compatible frequencies (option 3) | Full Range max. # of compatible frequencies (option 4) | Optimized: TV oh. 61-63 & TV oh. 67-69 & EU harmonized: 790-814 & 838-862 MHz & 863-865 MHz | Optimized: TV oh. 61-63 & TV oh. 69 & EU harmonized: 790-814 & 854-862 MHz & 863-865 MHz | Germany preferred: User Group 4 790-814 MHz & 838-865 MHz (only indoor) | Germany preferred: User Group 4 790-814 MHz & 854-865 MHz (indoor and outdoor) | Germany preferred: User Group 3A 790-814 MHz & 838-865 MHz | Germany preferred: User Group 3B 790-814 MHz & 838-865 MHz | Germany preferred: User Group 3C 790-814 MHz & 838-865 MHz |
|---------|--|--|--|--|---|--|---|--|--|--|--|
|         | Group 1  | Group 2  | Group 3  | Group 4  | Group 5   | Group 6  | Group 7   | Group 8  | Group 9  | Group 10   |  |
|         |  |  |  |  |   |  |   |  |  |  |  |

### R9 (Continued)

|         | Germany preferred:<br>User Group<br>3D 790-814<br>MHz &<br>838-865<br>MHz | Germany preferred:<br>User Group<br>2 790-814<br>MHz &<br>838-862<br>MHz | Germany preferred:<br>User Group<br>1 790-814<br>MHz &<br>838-862<br>MHz | France preferred:<br>User Group<br>A<br>(option 1) | France preferred:<br>User Group<br>A<br>(option 2) | France preferred:<br>User Group<br>B<br>(option 1) | France preferred:<br>User Group<br>B<br>(option 2) | France preferred:<br>User Group<br>C<br>(option 1) | France preferred:<br>User Group<br>C<br>(option 2) | Optimized:<br>TV oh. 61<br>790-798<br>MHz | Optimized:<br>TV oh. 62<br>798-806<br>MHz |
|---------|---|--|--|--|--|--|--|--|--|---|---|
| Channel | Group 12  | Group 13   | Group 14   | Group 15   | Group 16   | Group 17   | Group 18   | Group 19   | Group 20   | Group 21                                  | Group 22                                  |
| 1       | 790.400   | 790.100  | 791.050  | 791.500  | 790.750  | 790.500  | 792.775  | 790.300  | 791.000  | 790.100                                   | 798.100                                   |
| 2       | 791.350   | 793.325  | 792.175  | 792.500  | 791.750  | 792.025  | 794.225  | 791.000  | 794.775  | 790.925                                   | 798.925                                   |
| 3       | 794.975   | 794.425  | 792.750  | 793.750  | 793.250  | 794.225  | 794.975  | 792.975  | 797.100  | 791.525                                   | 799.525                                   |
| 4       | 796.725   | 796.950  | 795.200  | 795.250  | 793.750  | 794.975  | 796.900  | 797.100  | 797.500  | 792.575                                   | 800.575                                   |
| 5       | 800.475   | 797.900  | 796.425  | 795.750  | 794.500  | 796.900  | 798.100  | 797.900  | 798.300  | 793.900                                   | 801.900                                   |
| 6       | 805.700   | 800.050  | 799.750  | 800.500  | 799.500  | 797.300  | 798.500  | 800.975  | 802.775  | 795.650                                   | 803.650                                   |
| 7       | 806.400   | 806.100  | 802.675  | 801.250  | 801.750  | 801.500  | 801.500  | 806.300  | 808.975  | 796.050                                   | 804.050                                   |
| 8       | 808.475   | 807.575  | 805.400  | 807.750  | 808.500  | 809.500  | 806.500  | 813.500  | 813.100  | 797.200                                   | 805.200                                   |
| 9       | 809.050   | 808.050  | 806.100  | 811.250  | 817.750  | 812.900  | 810.975  | 818.025  | 820.000  | 797.900                                   | 805.900                                   |
| 10      | 809.875   | 808.800  | 811.950  | 819.500  | 820.250  | 821.300  | 822.100  | 820.000  | 822.300  | 794.600                                   | 802.600                                   |
| 11      | 811.500   | 813.500  | 813.400  | 822.750  | 823.250  | 822.500  | 824.025  | 822.300  | 823.000  |   |   |
| 12      | 839.350   | 838.100  | 838.100  | 824.500  | 823.750  | 826.225  | 826.225  | 824.975  | 824.225  |   |   |
| 13      | 840.475   | 840.050  | 838.500  | 825.750  | 826.500  | 826.975  | 826.975  | 828.000  | 828.000  |   |   |
| 14      | 841.875   | 840.800  | 843.950  | 827.250  | 827.500  | 828.500  | 829.300  | 828.700  | 829.100  |   |   |
| 15      | 843.500   | 843.825  | 851.200  | 828.250  | 828.250  | 828.900  | 829.700  | 829.100  | 829.500  |   |   |
| 16      | 849.050   | 844.250  | 852.425  | 790.750  | 795.500  | 798.500  | 805.300  | 792.225  | 790.300  |   |   |
| 17      | 852.725   | 846.100  | 853.400  | 798.750  | 802.500  | 802.975  | 809.500  | 796.700  | 807.000  |   |   |
| 18      | 853.700   | 849.325  | 854.100  | 799.500  | 803.750  | 810.225  | 812.900  | 800.225  | 812.700  |   |   |
| 19      | 858.975   | 853.900  | 856.175  | 809.250  | 806.750  | 813.300  | 813.300  | 812.700  | 814.300  |   |   |
| 20      | 859.500   | 859.825  | 856.750  | 810.500  | 811.500  | 814.500  | 814.100  | 816.975  | 816.225  |   |   |
| 21      | 860.725   | 860.950  | 857.575  | 812.250  | 814.750  | 816.775  | 822.500  | 826.025  | 824.975  |   |   |
| 22      | 793.875   | 861.500  | 858.675  | 815.750  | 815.500  | 863.150  | 863.125  | 863.150  | 863.125  |   |   |
| 23      | 801.050   | 790.600  | 797.900  | 816.500  | 816.500  | 863.550  | 863.525  | 863.550  | 863.525  |   |   |
| 24      | 806.800   | 791.575  | 807.050  | 817.750  | 818.500  | 864.175  | 864.175  | 864.175  | 864.175  |   |   |
| 25      | 813.700   | 792.800  | 807.750  | 823.500  | 819.750  | 864.600  | 864.625  | 864.600  | 864.625  |   |   |
| 26      | 854.400   | 811.250  | 859.200  | 863.150  | 825.250  |  |  |  |  |   |   |
| 27      | 857.875   | 811.825  | 861.400  | 863.550  | 863.125  |  |  |  |  |   |   |
| 28      | 861.700   | 812.950  |  | 864.175  | 863.525  |  |  |  |  |   |   |
| 29      | 863.300   | 855.575  |  | 864.600  | 864.175  |  |  |  |  |   |   |
| 30      |   | 856.050  |  |  | 864.625  |  |  |  |  |   |   |
| 31      |   | 859.250  |  |  |  |  |  |  |  |   |   |

### R9 (Continued)

|         | Netherlands preferred:<br>TV Ch. 63<br>806-814MHz<br>(option 1) | Netherlands preferred:<br>TV Ch. 63<br>806-814MHz<br>(option 2) | Optimized:<br>TV Ch. 61-63<br>790-814 MHz | FIN preferred:<br>790-822MHz<br>(option 1) | FIN preferred:<br>790-822MHz<br>(option 2) | Sweden preferred:<br>800-814MHz<br>(option 1) | Sweden preferred:<br>800-814MHz<br>(option 2) | NOR / DEN preferred:<br>800-820 MHz | Optimized TVchannels:<br>TV Ch. 67<br>838-846 MHz | Optimized TVchannels:<br>TV Ch. 68<br>846-854 MHz |
|---------|---|---|---|--|--|---|---|-------------------------------------|---|---|
| Channel | Group 23  | Group 24  | Group 25                                  | Group 26                                   | Group 27                                   | Group 28                                      | Group 29                                      | Group 30                            | Group 31  | Group 32  |
| 1       | 806.100   | 806.100   | 790.150                                   | 790.775                                    | 790.675                                    | 800.300                                       | 800.125                                       | 800.325                             | 838.100   | 846.100   |
| 2       | 806.925   | 806.800   | 791.200                                   | 791.175                                    | 791.825                                    | 800.700                                       | 801.125                                       | 801.800                             | 838.925   | 846.925   |
| 3       | 807.525   | 807.950   | 794.200                                   | 792.125                                    | 792.575                                    | 801.975                                       | 803.125                                       | 802.200                             | 839.525   | 847.525   |
| 4       | 808.575   | 808.350   | 795.375                                   | 792.650                                    | 794.225                                    | 802.500                                       | 803.775                                       | 802.950                             | 840.575   | 848.575   |
| 5       | 809.900   | 810.100   | 796.875                                   | 794.325                                    | 794.875                                    | 804.075                                       | 805.675                                       | 805.825                             | 841.900   | 849.900   |
| 6       | 811.650   | 811.425   | 797.825                                   | 801.550                                    | 796.925                                    | 806.950                                       | 807.050                                       | 807.950                             | 843.650   | 851.650   |
| 7       | 812.050   | 812.475   | 801.650                                   | 802.400                                    | 800.325                                    | 808.325                                       | 809.925                                       | 810.475                             | 844.050   | 852.050   |
| 8       | 813.200   | 813.075   | 803.350                                   | 805.200                                    | 805.550                                    | 810.225                                       | 811.500                                       | 811.075                             | 845.200   | 853.200   |
| 9       | 813.900   | 813.900   | 806.125                                   | 806.450                                    | 806.800                                    | 810.875                                       | 812.025                                       | 812.450                             | 845.900   | 853.900   |
| 10      | 810.600   | 809.400   | 808.675                                   | 811.675                                    | 809.600                                    | 812.875                                       | 813.300                                       | 814.825                             | 842.600   | 850.600   |
| 11      |   |   | 809.425                                   | 815.075                                    | 810.450                                    | 813.875                                       | 813.700                                       | 817.800                             |   |   |
| 12      |   |   | 811.550                                   | 817.125                                    | 817.675                                    | 803.450                                       | 804.925                                       | 818.300                             |   |   |
| 13      |   |   | 812.950                                   | 817.775                                    | 819.350                                    | 809.075                                       | 810.550                                       | 819.575                             |   |   |
| 14      |   |   | 813.350                                   | 819.425                                    | 819.875                                    |   |   | 800.850                             |   |   |
| 15      |   |   | 790.775                                   | 820.175                                    | 820.825                                    |   |   | 804.600                             |   |   |
| 16      |   |   | 794.900                                   | 821.325                                    | 821.225                                    |   |   | 813.250                             |   |   |
| 17      |   |   | 805.275                                   | 794.800                                    | 795.325                                    |   |   | 816.675                             |   |   |
| 18      |   |   | 806.750                                   | 799.400                                    | 797.425                                    |   |   |                                     |   |   |
| 19      |   |   | 807.600                                   | 799.900                                    | 801.750                                    |   |   |                                     |   |   |
| 20      |   |   | 810.375                                   | 804.200                                    | 802.775                                    |   |   |                                     |   |   |
| 21      |   |   |   | 807.375                                    | 804.625                                    |   |   |                                     |   |   |
| 22      |   |   |   | 809.225                                    | 807.800                                    |   |   |                                     |   |   |
| 23      |   |   |   | 810.250                                    | 812.100                                    |   |   |                                     |   |   |
| 24      |   |   |   | 814.575                                    | 812.600                                    |   |   |                                     |   |   |
| 25      |   |   |   | 816.675                                    | 817.200                                    |   |   |                                     |   |   |



**A24 FREQUENCY BAND (779-778 / 797-806)**

| Channel | L1      | L2      | L3      | L4      | L5      | L6      | L7      | L8      |
|---------|---------|---------|---------|---------|---------|---------|---------|---------|
| A1      | 779.125 | 779.250 | 779.625 | 779.750 | 780.625 | 780.250 | 779.125 | 782.875 |
| A2      | 779.375 | 779.500 | 779.875 | 780.500 | 781.125 |         | 779.375 | 783.000 |
| A3      | 780.125 | 780.000 | 780.375 | 781.000 | 781.375 |         | 779.875 | 783.125 |
| A4      | 780.750 | 780.875 | 781.250 | 782.125 | 781.750 |         | 780.500 | 783.250 |
| A5      | 782.000 | 781.500 | 781.625 | 782.375 | 782.625 |         | 781.500 | 783.375 |
| A6      | 782.500 | 781.875 | 782.250 | 782.750 |         |         | 782.375 | 783.500 |
| A7      |         |         |         |         |         |         | 782.750 |         |
| 1       | 797.125 | 797.250 | 797.625 | 797.750 | 798.625 | 798.250 | 797.125 | 800.875 |
| 2       | 797.375 | 797.500 | 797.875 | 798.500 | 799.125 |         | 797.375 | 801.000 |
| 3       | 798.125 | 798.000 | 798.375 | 799.000 | 799.375 |         | 797.875 | 801.125 |
| 4       | 798.750 | 798.875 | 799.250 | 800.125 | 799.750 |         | 798.500 | 801.250 |
| 5       | 800.000 | 799.500 | 799.625 | 800.375 | 800.625 |         | 799.500 | 801.375 |
| 6       | 800.500 | 799.875 | 800.250 | 800.750 |         |         | 800.375 | 801.500 |
| 7       |         |         |         |         |         |         | 800.750 |         |

| Channel | H1      | H2      | H3      | H4      | H5      | H6      | H7      | H8      |
|---------|---------|---------|---------|---------|---------|---------|---------|---------|
| A1      | 783.625 | 783.750 | 784.125 | 784.250 | 785.125 | 784.750 | 783.625 | 787.375 |
| A2      | 783.875 | 784.000 | 784.375 | 785.000 | 785.625 |         | 783.875 | 787.500 |
| A3      | 784.625 | 784.500 | 784.875 | 785.500 | 785.875 |         | 784.375 | 787.625 |
| A4      | 785.250 | 785.375 | 785.750 | 786.625 | 786.250 |         | 785.000 | 787.750 |
| A5      | 786.500 | 786.000 | 786.125 | 786.875 | 787.125 |         | 786.000 | 787.875 |
| A6      |         | 786.375 | 786.750 | 787.250 |         |         | 786.875 |         |
| A7      |         |         |         |         |         |         | 787.250 |         |
| 1       | 801.625 | 801.750 | 802.125 | 802.250 | 803.125 | 802.750 | 801.625 | 805.375 |
| 2       | 801.875 | 802.000 | 802.375 | 803.000 | 803.625 |         | 801.875 | 805.500 |
| 3       | 802.625 | 802.500 | 802.875 | 803.500 | 803.875 |         | 802.375 | 805.625 |
| 4       | 803.250 | 803.375 | 803.750 | 804.625 | 804.250 |         | 803.000 | 805.750 |
| 5       | 804.500 | 804.000 | 804.125 | 804.875 | 805.125 |         | 804.000 | 805.875 |
| 6       | 805.000 | 804.375 | 804.750 | 805.250 |         |         | 804.875 |         |
| 7       |         |         |         |         |         |         | 805.250 |         |

| Channel | C1      | C2      | C3      | C4      | C5      | C6      | C7      | C8      | C9      |
|---------|---------|---------|---------|---------|---------|---------|---------|---------|---------|
| 1       | 779.125 | 779.500 | 779.250 | 779.500 | 779.125 | 779.250 | 779.250 | 779.250 | 779.500 |
| 2       | 779.375 | 779.875 | 779.750 | 780.000 | 779.375 | 779.500 | 780.000 | 780.750 | 780.250 |
| 3       | 780.875 | 782.375 | 780.500 | 780.750 | 780.125 | 780.000 | 780.500 | 781.625 | 780.750 |
| 4       | 781.875 | 784.125 | 782.000 | 782.250 | 781.625 | 781.375 | 781.500 | 782.000 | 781.750 |
| 5       | 783.750 | 786.500 | 782.625 | 784.000 | 783.625 | 782.500 | 781.875 | 783.625 | 782.125 |
| 6       | 786.125 | 787.500 | 783.750 | 785.375 | 784.250 | 783.375 | 784.000 | 784.250 | 784.250 |
| 7       | 787.250 | 787.750 | 785.750 | 786.000 | 785.375 | 784.875 | 785.625 | 785.375 | 785.875 |
| 8       |         |         | 786.750 | 787.000 | 786.625 | 786.125 | 786.750 | 786.750 | 787.000 |
| 9       |         |         |         |         | 787.000 | 786.500 | 787.375 | 787.250 | 787.625 |
| 10      |         |         |         |         | 787.500 | 787.125 | 787.625 | 787.500 | 787.875 |

| Channel | E1      | E2      | E3      | E4      | E5      | E6      | E7      | E8      | E9      |
|---------|---------|---------|---------|---------|---------|---------|---------|---------|---------|
| 1       | 797.125 | 797.500 | 797.250 | 797.500 | 797.125 | 797.250 | 797.250 | 797.250 | 797.500 |
| 2       | 797.375 | 797.875 | 797.750 | 798.000 | 797.375 | 797.500 | 798.000 | 798.750 | 798.250 |
| 3       | 798.875 | 800.375 | 798.500 | 798.750 | 798.125 | 798.000 | 798.500 | 799.625 | 798.750 |
| 4       | 799.875 | 802.125 | 800.000 | 800.250 | 799.625 | 799.375 | 799.500 | 800.000 | 799.750 |
| 5       | 801.750 | 804.500 | 800.625 | 802.000 | 801.625 | 800.500 | 799.875 | 801.625 | 800.125 |
| 6       | 804.125 | 805.500 | 801.750 | 803.375 | 802.250 | 801.375 | 802.000 | 802.250 | 802.250 |
| 7       | 805.250 | 805.750 | 803.750 | 804.000 | 803.375 | 802.875 | 803.625 | 803.375 | 803.875 |
| 8       |         |         | 804.750 | 805.000 | 804.625 | 804.125 | 804.750 | 804.750 | 805.000 |
| 9       |         |         |         |         | 805.000 | 804.500 | 805.375 | 805.250 | 805.625 |
| 10      |         |         |         |         | 805.500 | 805.125 | 805.625 | 805.500 | 805.875 |

| Channel | F1      | F2      | F3      | F4      | F5      | F6      | F7      | F8      | F9      |
|---------|---------|---------|---------|---------|---------|---------|---------|---------|---------|
| 1       | 797.125 | 797.250 | 799.000 | 797.625 | 797.375 | 797.125 | 797.375 | 797.250 | 797.125 |
| 2       | 797.875 | 797.500 | 800.125 | 798.000 | 797.750 | 797.375 | 797.625 | 797.500 | 797.500 |
| 3       | 798.250 | 798.750 | 801.500 | 799.000 | 798.875 | 797.750 | 798.875 | 797.875 | 799.125 |
| 4       | 799.750 | 799.500 | 803.500 | 800.250 | 801.625 | 798.750 | 799.250 | 799.625 | 800.125 |
| 5       | 801.875 | 802.250 | 804.250 | 802.000 | 804.125 | 799.875 | 800.250 | 801.000 | 802.000 |
| 6       | 802.875 | 802.750 | 805.875 | 803.500 |         | 801.375 | 801.000 | 802.250 | 804.250 |
| 7       | 804.250 | 805.125 |         |         |         | 803.625 | 803.000 | 803.875 | 804.750 |
| 8       |         |         |         |         |         | 804.375 | 805.250 | 805.000 | 805.500 |
| 9       |         |         |         |         |         | 804.875 |         | 805.875 |         |

**JBX FREQUENCY BAND (806-125, 809.750 MHz)**

| Channel | Group 1 | Group 2 | Group 3 | Group 4 | Group 5 | Group 6 | Group 7 |
|---------|---------|---------|---------|---------|---------|---------|---------|
| 1       | 806.125 | 806.250 | 806.625 | 806.750 | 807.625 | 807.250 | 806.125 |
| 2       | 806.375 | 806.500 | 806.875 | 807.500 | 808.125 |         | 806.375 |
| 3       | 807.125 | 807.000 | 807.375 | 808.000 | 808.375 |         | 806.875 |
| 4       | 807.750 | 807.875 | 808.250 | 809.125 | 808.750 |         | 807.500 |
| 5       | 809.000 | 808.500 | 808.625 | 809.375 | 809.625 |         | 808.500 |
| 6       | 809.500 | 808.875 | 809.250 | 809.750 |         |         | 809.375 |
| 7       |         |         |         |         |         |         | 809.750 |

| Channel | F1      | F2      | F3      | F4      | F5      | F6      | F7      | F8      | F9      |
|---------|---------|---------|---------|---------|---------|---------|---------|---------|---------|
| 1       |         |         |         |         |         |         |         |         |         |
| 2       |         |         |         |         |         |         |         |         |         |
| 3       |         |         |         |         |         |         |         |         |         |
| 4       |         |         |         |         |         |         |         |         |         |
| 5       |         |         |         |         |         |         |         |         |         |
| 6       |         |         |         |         | 806.125 |         |         |         |         |
| 7       |         |         | 806.375 | 807.000 | 806.375 |         |         |         |         |
| 8       | 806.250 | 807.625 | 808.125 | 807.250 | 807.125 |         |         |         |         |
| 9       | 806.750 | 808.750 | 809.000 | 807.750 | 807.750 |         | 806.125 |         | 808.000 |
| 10      | 809.500 | 809.375 | 809.375 | 808.875 | 809.000 | 806.750 | 808.500 | 806.875 | 808.625 |
| 11      | 809.750 | 809.750 | 809.625 | 809.750 | 809.500 | 808.750 | 809.125 | 808.375 | 809.500 |
| 12      |         |         |         |         |         | 809.625 | 809.625 | 809.125 | 809.750 |

**Q6 FREQUENCY BAND (740.125 - 751.875 MHz)**

| Channel | Group 1 | Group 2 | Group 3 | Group 4 | Group 5 |
|---------|---------|---------|---------|---------|---------|
| 1       | 740.275 | 740.275 | 740.250 | 740.275 | 740.375 |
| 2       | 741.000 | 740.825 | 740.900 | 740.800 | 741.275 |
| 3       | 741.450 | 741.725 | 741.325 | 742.550 | 741.700 |
| 4       | 742.425 | 742.250 | 742.075 | 743.350 | 743.450 |
| 5       | 742.850 | 742.975 | 743.025 | 743.775 | 743.925 |
| 6       | 743.600 | 743.450 | 743.475 | 745.525 | 744.775 |
| 7       | 744.050 | 744.425 | 744.525 | 748.125 | 746.975 |
| 8       | 745.050 | 746.825 | 745.375 | 748.925 | 748.700 |
| 9       | 747.450 | 747.825 | 747.925 | 749.350 | 749.600 |
| 10      | 748.425 | 748.275 | 748.375 | 751.250 | 750.925 |
| 11      | 748.900 | 749.025 | 749.200 | 751.775 | 751.650 |
| 12      | 749.625 | 749.450 | 749.625 |         |         |
| 13      | 750.150 | 750.425 | 750.250 |         |         |
| 14      | 751.050 | 750.875 | 751.100 |         |         |
| 15      | 751.600 | 751.600 | 751.600 |         |         |





## EU DECLARATION OF CONFORMITY

We,  
of

Shure Incorporated  
5800 Touhy Avenue  
Niles, Illinois, 60714-4608 U.S.A.  
Phone: (847) 600-2000  
Web: [www.Shure.com](http://www.Shure.com)

Declare under our sole responsibility that the following product

Model: UR1, UR2 Description: Body Pack and Handheld UHF Transmitters

Model: UR4S, UR4D Description: UHF Receivers

conforms to the essential requirements and other relevant provisions of the R&TTE Directive (1999/5/EC).

The products comply with the following product family, harmonized or national standards:

EN 301 489-1 V1.4.1 (2002-08)

EN 301 489-9 V1.2.1 (2002-08)

EN 300 422-1 V1.2.2 (2000-08)

EN 300 422-2 V1.1.1 (2000-08)

In addition, the UR4S and UR4D products comply with the following product family, harmonized or national standard;

EN60065

EN61000-3-2:2000 Amendment A1:1998; A2:1998; A14:2000

EN 61000-3-3 Amendment A1:2001

The technical documentation is kept at:

Shure Incorporated, Corporate Quality Engineering Division  
SHURE Europe GmbH, EMEA Approval

Manufacturer: Shure Incorporated

Signed:  Date: 6 January 2005

Name and Title: Craig Kozkar, EMC Project Engineer, Corporate Quality Engineering Division

European Representative: SHURE Europe GmbH

Signed:  Date: 6 January 2005

Name and Title: Wolfgang Bilz, Dipl. Ing. (FH), EMEA Approval

SHURE Europe GmbH

Headquarters Europe, Middle East & Africa

Wannenäcker Str. 28

D-74078 Heilbronn, Germany

Phone: +49 - (0)7131 - 7214 - 0

Fax: +49 - (0)7131 - 7214 - 14

FCC DECLARATION OF CONFORMITY

AAAA Y^E  
AAAA [-

AAAAAAU~!^AQ}&[!][!æc^â  
AAAAAA í î €€ Á Y É Á V [ ~ @ ~ Á C E Ç ^ } ~ ^ Á  
Á Þ ä | ^ • É Á Q S Á Î € Î F Î È Î € Î É Á W È Û È C È  
Á Á Ç Î Î Î D Á Î O O È G O € € Á

Ö^&|æ!^Á~}â^!Á[~!Á•[|^!^•][ ]•âä|äc~Ác@æcÁc@^Á~[|[ , â} \* Á ]! [ â ~ & c Á

T [ â ^ | K W Ü Î Û Ä æ } â Á W Ü Î Ö Ä Ö ^ • & ! ä ] c ä [ ] K W P Ø Ä Ü ^ & ^ ä ç ! • Á

Pæ•Áà^^}Ác^•c^âÁæ}âÁ-[~}âÁc[Á&[ { ]|^Á , äc@Ác@^Á|ä { äc•Á-[!Áæ}Á~}â}c^}cä [ ]æ|Á!æâæc [ ! Á ä ^ ç ä & ^ É Á æ } â Á  
æ ] ] ! [ ç ^ á á ~ } â ^ ! Á c @ ^ Á Ö ^ & | æ ! æ c ä [ ] Á [ - Á Ö [ ] ~ [ ! { ä c ^ Á ] ! [ ç ä • ä [ ] Á [ - Á c @ ^ Á Ü æ ! c Á F Í Á [ - Á c @ ^ Á Ø Ö Ö Á ! ~ | ^ • È

U ] ^ ! æ c ä [ ] Á ä • Á • ~ ä b ^ & c Á c [ Á c @ ^ Á ~ [ |[ | , ä } \* Á c , [ Á & [ ] ä ä c ä [ ] • K Á  
Á Á Á Á Á F É Á V @ ä • Á ä ^ ç ä & ^ Á { æ ^ Á } [ c Á & æ ~ • ^ Á @ æ ! { ~ | Á ä } c ^ ! - ^ ! ^ } & ^ É Á  
Á Á Á Á Á G É Á V @ ä • Á ä ^ ç ä & ^ Á { ~ • c Á æ & & ^ } c Á æ } ^ Á ä } c ^ ! - ^ ! ^ } & ^ Á ! ^ & ^ ä ç ^ ä É Á ä } & | ~ ä ä } \* Á ä } c ^ ! - ^ ! ^ } & ^ Á c @ æ c Á { æ ^ Á  
Á Á Á Á Á Á Á Á & æ ~ • ^ Á ~ } â ^ • ä ! ^ á Á [ ] ^ ! æ c ä [ ] È

Ü ä \* } ^ á

Ö æ ^ R æ } ~ æ ! ^ Á Î Á G € € Í Á



Þ æ { ^ É Á V ä c | ^ Á Á Ö ! æ ä \* Á S [ : [ \ æ !  
Á Ö T Ö Á Ú ; [ b ^ & c Á Ö } \* ä } ^ ^ ! É Á Ö [ ! ] [ ! æ c ^ Á Ü ~ æ | ä c ^ É Á Ü @ ~ ! ^ Á Q } & [ ! ] [ ! æ c ^ á



SHURE Incorporated <http://www.shure.com>  
美国、加拿大、拉丁美洲、加勒比海地区：  
5800 W. Touhy Avenue, Niles, IL 60714-4608, U.S.A.  
电话：847-600-2000 美国 传真：847-600-1212 国际 传真：847-600-6446  
欧洲、中东、非洲：  
Shure Europe GmbH，电话：49-7131-72140 传真：49-7131-721414  
亚太地区：  
Shure Asia Limited，电话：852-2893-4290 传真：852-2893-4055